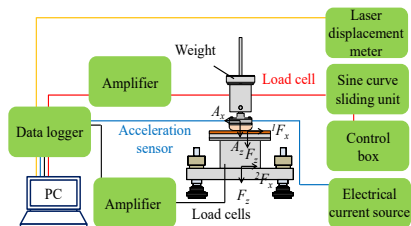
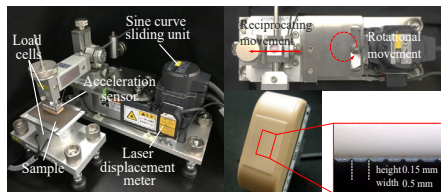


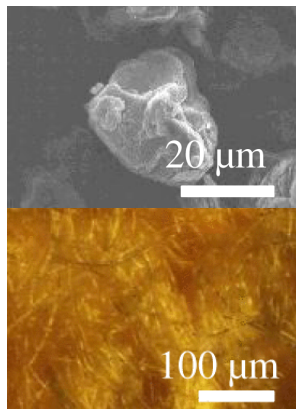
The mechanism for feeling "shittori feel"

Professor Yoshimune Nonomura

Biomimetic tactile sensing system for friction evaluation



Cosmetic powder and artificial leather with shittori feel

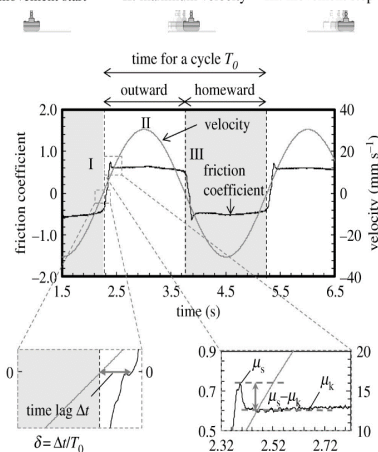


Content:

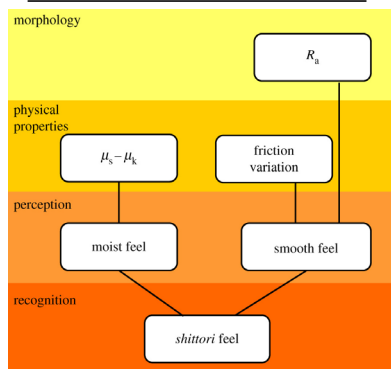
Shittori feel is defined as a texture that is moderately moisturized; however, many people experience '*shittori* feel' when they touch a dry solid material containing little liquid. Here, *shittori* feel was evaluated for 12 materials. We found that the highest score of *shittori* feel was achieved by powders. Multiple regression analysis showed that *shittori* feel is a complex sense of moist and smooth feels. We analysed the relationship between the physical properties and the moist/smooth feels to show how subjects felt certain feels simultaneously. The moist and smooth feels are related to the surface roughness and friction characteristics of the materials. The moist and smooth feels can be perceived when the finger starts to move on the material surface and when the finger moves and rubs the material surface, respectively.

Friction data of cosmetic powder

I: movement start II: maximum velocity III: movement stop



Mechanism of shittori feel



Appealing point:

We study the mechanisms of human perception and develop new cosmetic, food and chemical materials. We are looking forward to hearing from companies in a wide range of fields.

Yamagata University Graduate School of Science and Engineering
 Research Interest : Interfacial chemistry,
 Cosmetics



E-mail : nonoy@yz.yamagata-u.ac.jp
 Tel : +81-238-26-3164
 Fax : +81-238-26-3414
 HP : <http://nonomura.yz.yamagata-u.ac.jp/>

Figures are from the following paper:
 K. Kikegawa *et al.*, *R. Soc. Open Sci.*
 2019, 6(7), 190039.